



INTERNATIONAL COFFEE ORGANIZATION
ORGANIZACIÓN INTERNACIONAL DEL CAFÉ
ORGANIZAÇÃO INTERNACIONAL DO CAFÉ
ORGANISATION INTERNATIONALE DU CAFÉ

E

MONTHLY COFFEE MARKET REPORT

July 2011

Downward corrections to coffee prices recorded in June continued during July 2011, as the monthly average of the ICO composite indicator price fell to 210.36 US cents/lb compared to 215.58 in June, a drop of 2.4%. Despite this fall, price levels continue to be considerably higher than those recorded in 2010. The downward correction was far more marked in the case of Robustas with the average of the 2nd and 3rd positions on the London futures market falling by 6.5% in relation to the level in June. Price volatility eased slightly in the case of Arabica prices during July.

The value of the United States dollar depreciated in relation to the currencies of a number of exporting countries during July 2011, notably the Brazilian real, the Colombian peso and the Indonesian rupiah, accentuating the impact of downward price corrections.

World production in crop year 2010/11, which is expected to be around 133.3 million bags, remains the highest level ever recorded. For crop year 2011/12, preliminary estimates indicate total production of around 130 million bags. It should be noted that crop year 2011/12 is an off year in the biennial cycle characterising Arabica production in Brazil.

Exports by all exporting countries during June 2011 totalled 8.8 million bags compared to 8 million bags in June 2010. The cumulative total for exports in the first nine months of coffee year 2010/11 (October 2010 to June 2011) was 80.7 million bags compared to 69.7 million bags for the same period in coffee year 2009/10, an increase of 15.9%. This level of exports during the first nine months of coffee year 2010/11 is the highest ever recorded. A brief analysis of exports by selected exporting countries is included in this report.

Graph 1: ICO composite indicator prices
Daily: 1 July 2010 to 12 August 2011



Price movements

Coffee prices fell back further during July. The monthly average of the **ICO composite indicator price** was 210.36 US cents/lb compared to 215.58 in June, a drop of 2.4% (Table 1). Graphs 1 and 2 show ICO daily composite indicator and group indicator prices since 1 July 2010. The fall in Arabica prices was less marked than in the case of Robustas. Prices of **Colombian Milds** and **Other Milds** went

down by 1% and 2.5% respectively, while those of **Brazilian Naturals** decreased by 2%. Prices of **Robustas** fell by 4.4% compared to their level in June. Differentials between prices of Colombian Milds and the other groups of coffee widened further (Table 2). This widening in the differentials was more marked in the case of Other Milds and Brazilian Naturals (Graph 3).

Graph 2: Group indicator prices
Daily: 1 July 2010 to 12 August 2011

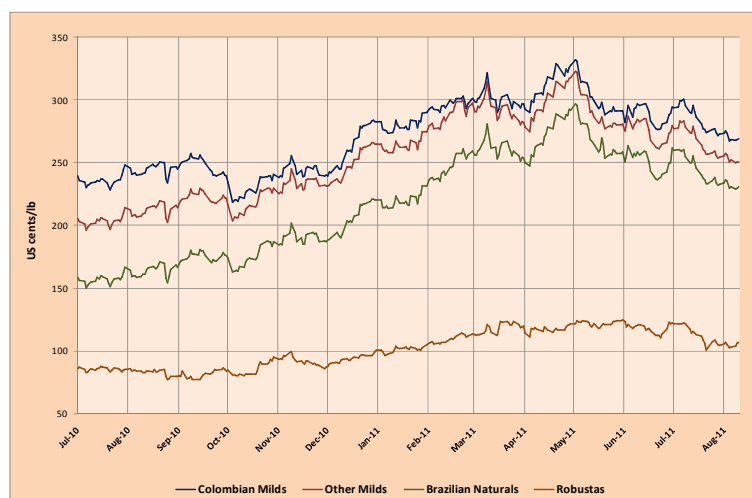


Table 1: ICO indicator prices and futures prices (US cents/lb) – July 2011

	ICO Composite	Colombian Milds	Other Milds	Brazilian Naturals	Robustas	New York*	London*
Monthly averages							
2010							
July	153.41	235.52	203.21	156.87	85.27	165.23	78.17
August	157.46	243.98	211.59	163.21	82.68	175.10	78.42
September	163.61	247.77	222.71	175.15	81.28	187.80	75.87
October	161.56	230.02	217.64	175.38	85.27	190.43	80.08
November	173.90	244.02	233.48	190.62	92.04	206.92	86.40
December	184.26	261.97	248.17	204.25	94.09	221.51	88.70
2011							
January	197.35	279.88	263.77	219.77	101.09	238.05	96.02
February	216.03	296.44	287.89	247.00	109.35	261.41	104.53
March	224.33	300.68	292.07	260.98	118.13	274.10	111.36
April	231.24	312.95	300.12	273.40	117.37	285.58	111.34
May	227.97	302.17	291.09	268.66	121.98	277.72	116.76
June	215.58	287.95	274.98	250.59	117.95	262.52	110.51
July	210.36	285.21	268.02	245.69	112.73	255.90	103.36
Annual averages							
2000	64.24	102.60	87.07	79.86	41.41	94.58	40.11
2001	45.59	72.05	62.28	50.70	27.54	58.86	23.92
2002	47.74	64.90	61.52	45.23	30.01	57.02	25.88
2003	51.90	65.33	64.20	50.31	36.95	65.24	34.11
2004	62.15	81.44	80.47	68.97	35.99	79.53	32.85
2005	89.36	115.73	114.86	102.29	50.55	111.38	46.80
2006	95.75	116.80	114.40	103.92	67.55	112.30	59.77
2007	107.68	125.57	123.55	111.79	86.60	121.83	78.56
2008	124.25	144.32	139.78	126.59	105.28	136.46	97.17
2009	115.67	177.43	143.84	115.33	74.58	128.40	67.69
2010	147.24	225.46	195.96	153.68	78.74	165.20	71.98
% change between Jul-11 and Jun-11							
	-2.4	-1.0	-2.5	-2.0	-4.4	-2.5	-6.5
% change between Jul-11 and Jul-10							
	37.1	21.1	31.9	56.6	32.2	54.9	32.2
% change between Jul-11 and 2010 average							
	42.9	26.5	36.8	59.9	43.2	54.9	43.6
Volatility (%)							
Jul-10	6.3	5.2	6.2	7.7	7.4	8.2	9.6
Aug-10	9.3	7.8	9.0	11.2	9.4	10.7	12.5
Sep-10	5.3	4.5	5.3	6.7	11.8	6.2	8.5
Oct-10	8.9	9.2	8.7	9.2	10.3	10.7	10.6
Nov-10	8.3	7.3	8.6	9.8	9.1	9.4	11.1
Dec-10	5.7	6.5	5.9	7.3	5.2	4.0	8.1
Jan-11	6.7	6.2	6.7	8.0	7.0	7.3	7.6
Feb-11	5.2	4.6	6.3	5.8	4.9	4.6	6.0
Mar-11	8.9	8.6	8.8	9.7	10.3	9.8	8.3
Apr-11	6.6	6.6	6.6	6.5	8.8	7.7	7.2
May-11	6.3	5.6	6.4	8.5	5.7	7.1	4.8
Jun-11	7.8	7.3	7.8	9.6	9.6	9.2	11.2
Jul-11	5.8	5.4	5.5	5.8	9.9	6.3	10.3
Variation between Jul-11 and Jun-11							
	-2.0	-2.0	-2.2	-3.8	0.4	-2.9	-0.9

*Average of the 2nd and 3rd positions

Table 2: Price differentials (US cents/lb)

	Colombian Milds Other Milds	Colombian Milds Brazilian Naturals	Colombian Milds Robustas	Colombian Milds New York*	Other Milds Brazilian Naturals	Other Milds Robustas	Brazilian Naturals Robustas	New York* London*
Jul-10	32.31	78.65	150.25	70.29	46.34	117.94	71.60	87.06
Aug-10	32.39	80.77	161.30	68.88	48.38	128.91	80.53	96.68
Sep-10	25.06	72.62	166.49	59.97	47.56	141.43	93.87	111.93
Oct-10	12.38	54.64	144.75	39.59	42.26	132.37	90.11	110.35
Nov-10	10.54	53.40	151.98	37.10	42.86	141.44	98.58	120.52
Dec-10	13.80	57.72	167.88	40.46	43.92	154.08	110.16	132.81
Jan-11	16.11	60.11	178.79	41.83	44.00	162.68	118.68	142.03
Feb-11	8.55	49.44	187.09	35.03	40.89	178.54	137.65	156.88
Mar-11	8.61	39.70	182.55	26.58	31.09	173.94	142.85	162.74
Apr-11	12.83	39.55	195.58	27.37	26.72	182.75	156.03	174.24
May-11	11.08	33.51	180.19	24.45	22.43	169.11	146.68	160.96
Jun-11	12.97	37.36	170.00	25.44	24.39	157.03	132.63	152.00
Jul-11	17.19	39.52	172.48	29.30	22.33	155.29	132.96	152.55
% change between Jul-11 and Jun-11								
	32.5	5.8	1.5	15.2	-8.4	-1.1	0.2	0.4

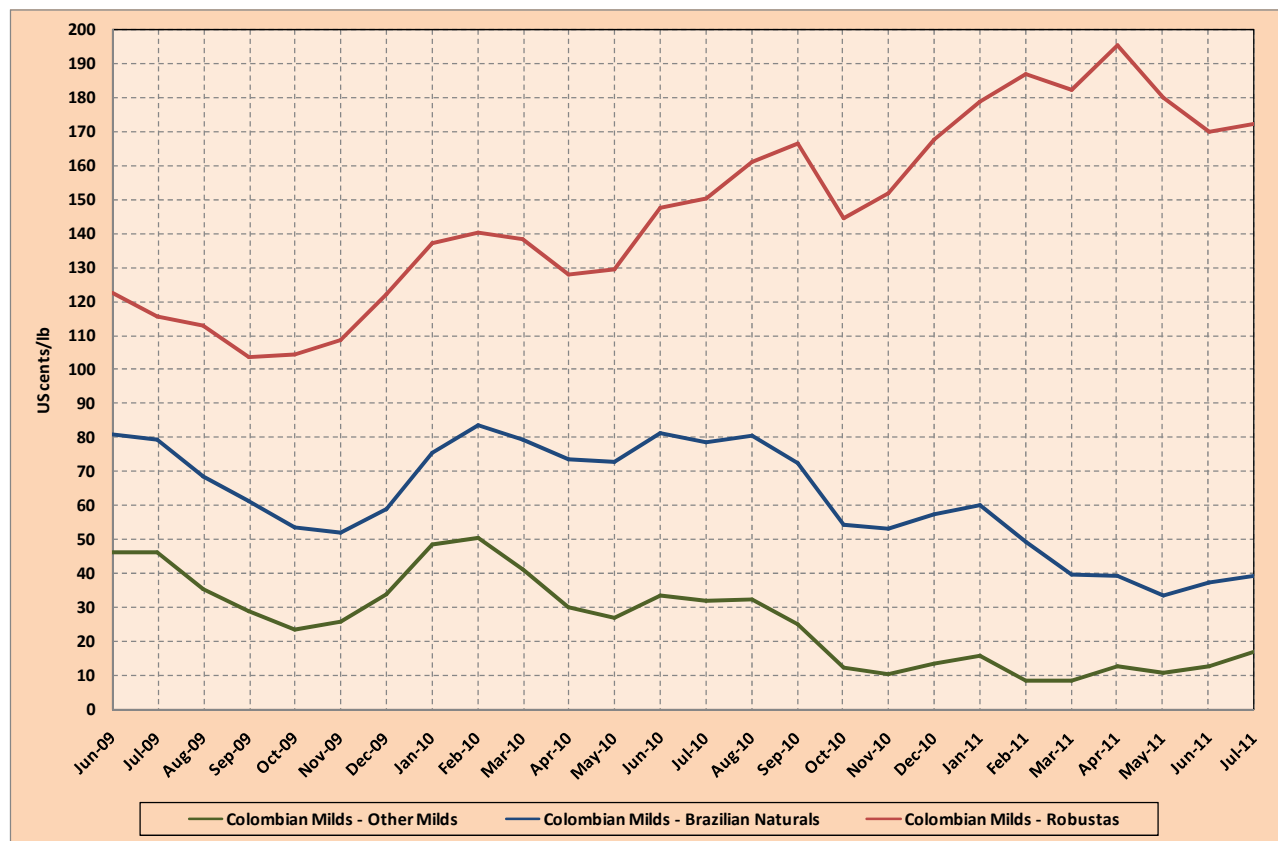
*Average of the 2nd and 3rd positionsGraph 3: Differential between prices of Colombian Milds and the other three coffee groups
June 2009 to July 2011

Table 3: Production in selected exporting countries

Crop year commencing	2007	2008	2009	2010	% change 2009-2010
TOTAL	120 031	128 424	123 216	133 308	8.2
Africa	15 965	15 969	15 822	17 544	10.9
Cameroon	795	750	750	750	0.1
Côte d'Ivoire	2 317	2 397	1 795	2 200	22.6
Ethiopia	5 967	4 949	6 931	7 450	7.5
Kenya	652	541	630	833	32.3
Tanzania	810	1 186	709	917	29.4
Uganda	3 250	3 197	2 797	2 800	0.1
Others	2 175	2 950	2 212	2 594	17.3
<i>Arabicas</i>	<i>8 410</i>	<i>7 893</i>	<i>9 146</i>	<i>10 303</i>	<i>12.6</i>
<i>Robustas</i>	<i>7 555</i>	<i>8 076</i>	<i>6 676</i>	<i>7 241</i>	<i>8.5</i>
Asia & Oceania	31 243	34 724	37 001	35 156	-5.0
India	4 319	3 950	4 950	4 983	0.7
Indonesia	7 777	9 612	11 380	8 856	-22.2
Papua New Guinea	968	1 028	1 038	867	-16.5
Thailand	653	675	794	752	-5.3
Vietnam	16 467	18 500	18 200	18 500	1.6
Others	1 060	958	639	1 198	87.5
<i>Arabicas</i>	<i>4 241</i>	<i>4 328</i>	<i>4 989</i>	<i>4 710</i>	<i>-5.6</i>
<i>Robustas</i>	<i>27 002</i>	<i>30 396</i>	<i>32 012</i>	<i>30 446</i>	<i>-4.9</i>
Mexico & Central America	18 394	17 423	16 893	17 607	4.2
Costa Rica	1 791	1 320	1 450	1 569	8.2
El Salvador	1 505	1 450	1 065	1 840	72.7
Guatemala	4 100	3 785	3 835	3 950	3.0
Honduras	3 842	3 450	3 575	3 830	7.1
Mexico	4 150	4 651	4 200	4 000	-4.8
Nicaragua	1 903	1 442	1 831	1 300	-29.0
Others	1 103	1 324	938	1 118	19.3
<i>Arabicas</i>	<i>18 257</i>	<i>17 280</i>	<i>16 759</i>	<i>17 478</i>	<i>4.3</i>
<i>Robustas</i>	<i>136</i>	<i>143</i>	<i>134</i>	<i>130</i>	<i>-3.4</i>
South America	54 429	60 309	53 500	63 000	17.8
Brazil	36 070	45 992	39 470	48 095	21.9
Colombia	12 504	8 664	8 098	9 200	13.6
Ecuador	1 110	691	813	854	5.0
Peru	3 063	3 872	3 286	4 000	21.7
Others	1 682	1 090	1 832	850	-53.6
<i>Arabicas</i>	<i>43 174</i>	<i>49 391</i>	<i>42 443</i>	<i>51 038</i>	<i>20.2</i>
<i>Robustas</i>	<i>11 256</i>	<i>10 918</i>	<i>11 056</i>	<i>11 963</i>	<i>8.2</i>
TOTAL	120 031	128 424	123 216	133 308	8.2
Colombian Milds	13 674	9 964	9 181	10 620	15.7
Other Milds	27 974	27 168	27 128	27 859	2.7
Brazilian Naturals	32 434	41 759	37 029	45 049	21.7
Robustas	45 949	49 533	49 878	49 780	-0.2
<i>Arabicas</i>	<i>74 082</i>	<i>78 891</i>	<i>73 338</i>	<i>83 528</i>	<i>13.9</i>
<i>Robustas</i>	<i>45 949</i>	<i>49 533</i>	<i>49 878</i>	<i>49 780</i>	<i>-0.2</i>
TOTAL	100.0	100.0	100.0	100.0	
Colombian Milds	11.4	7.8	7.5	8.0	
Other Milds	23.3	21.2	22.0	20.9	
Brazilian Naturals	27.0	32.5	30.1	33.8	
Robustas	38.3	38.6	40.5	37.3	
<i>Arabicas</i>	<i>61.7</i>	<i>61.4</i>	<i>59.5</i>	<i>62.7</i>	
<i>Robustas</i>	<i>38.3</i>	<i>38.6</i>	<i>40.5</i>	<i>37.3</i>	

In thousand bags

The exchange rate between the US dollar and the currencies of some exporting countries, namely the Brazilian real, the Colombian peso and the Indonesian rupiah, fell to lower levels in July compared to June. Graphs 4, 5 and 6 show weekly variations in the exchange rates of the US dollar to the Brazilian real, the Colombian peso and the Indonesian rupiah over the last two years.

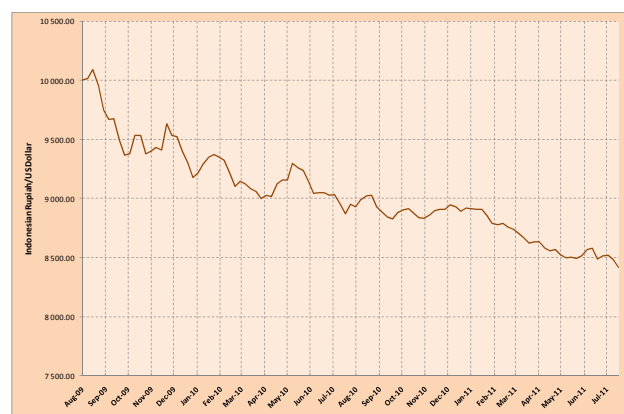
Graph 4: Exchange rate: Brazilian real and US dollar



Graph 5: Exchange rate: Colombian peso and US dollar



Graph 6: Exchange rate: Indonesian rupiah and US dollar



Market fundamentals

Total production in crop year 2010/11 is 133.3 million bags, representing an increase of 8.2% in relation to the level of 123.2 million bags in the previous crop year (Table 3). The initial estimate of production in crop year 2011/12 is around 130 million bags. This crop year coincides with lower production in Brazil in accordance with the biennial cycle characterising Arabica production. The fall was relatively slight in comparison with previous off years. Frosts were recently reported in Brazilian coffee-growing areas, but preliminary reports suggest that any damage to next year's crop will be minor.

October to June exports in selected exporting countries

The total volume exported in the first nine months of coffee year 2010/11 was 80.7 million bags compared to 69.7 million bags for the same period in the previous coffee year, an increase of 15.9%. This is the highest level ever recorded for the first nine months of the coffee year. The Annex shows total exports in the first nine months of coffee years 2001/02 to 2010/11.

With the exception of Colombian Milds, record export levels were recorded by all groups of coffee in 2010/11. The Colombian Milds group was unable to achieve this record level of exports given reduced production in Colombia during the last three years. Arabica exports totalled 52.5 million bags while Robusta exports totalled 28.2 million bags. Both types of coffee achieved record export levels.

The situation was slightly different in the case of performance by region. During the course of the last ten coffee years the highest level of exports for **Africa** was recorded in the first nine months of coffee year 2002/03, when they reached 9.2 million bags, whereas they totalled only 8.2 million bags in 2010/11. Ethiopia exported 2.4 million bags during this period, representing the highest level ever recorded. Exports by Côte d'Ivoire have declined from the level of 2.4 million bags recorded in 2001/02. The highest level of exports by Uganda was 2.3 million bags in the first nine months of coffee year 2007/08.

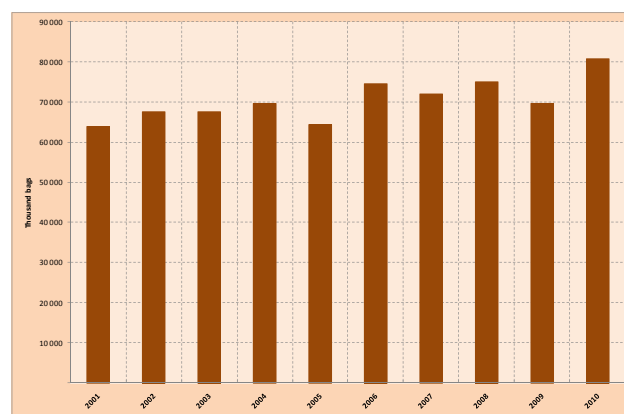
In **Asia & Oceania**, the highest level of exports was 23.8 million bags for the first nine months of coffee year 2010/11. This level of exports was mainly due to the export performance of India, which exported a volume of 4.9 million bags, an increase of 71% compared to the same period in 2009/10. Indonesia and Vietnam recorded their biggest export volumes in 2009/10 (4.8 million bags) and 2006/07 (14.8 million bags) respectively.

In **Mexico & Central America** the highest export level was recorded in 2010/11, at 12.5 million bags against 11.3 million bags in 2007/08. Only Honduras and El Salvador achieved their highest export levels. Costa Rica and Mexico were unable to repeat their export levels of coffee year 2001/02, which were 1.5 million bags and 2.3 million bags respectively. As for Guatemala, the level of 3.1 million bags reached in 2002/03 remains the highest.

In **South America** the record volume of exports was 36.3 million bags in 2010/11. During this period, Brazil exported 26.4 million bags, the highest level ever recorded. The strongest performance by Colombia was recorded in coffee year 2007/08 for an export volume of 9.1 million bags; this was followed by a decline in export levels attributable to lower production in recent years.

Graph 7 shows total exports during the first nine months of the coffee year from 2001/02 to 2010/11. Table 4 shows total exports of all forms of coffee during the first nine months of the last two coffee years.

Graph 7: Total exports during the first nine months of the coffee year



**Table 4: Total exports of all forms of coffee
(October to June 2009/10 and 2010/11)**

	2009/10	2010/11	% change
TOTAL	69 670	80 725	15.9
Colombian Milds	6 250	7 683	22.9
Other Milds	16 665	19 534	17.2
Brazilian Naturals	22 574	25 290	12.0
Robustas	24 180	28 217	16.7
Arabicas	45 489	52 508	15.4
Robustas	24 180	28 217	16.7
Angola	3	6	88.0
Benin	0	0	
Bolivia	58	42	-28.4
Brazil	22 347	26 368	18.0
Burundi	76	282	269.1
Cameroon	669	499	-25.4
Central African Republic	79	87	9.1
Colombia	5 458	6 735	23.4
Congo, Dem. Rep. of	109	101	-7.5
Congo, Rep. of	0	0	
Costa Rica	1 020	1 016	-0.4
Côte d'Ivoire	1 474	700	-52.5
Cuba	5	6	23.5
Dominican Republic	30	60	96.7
Ecuador	795	960	20.8
El Salvador	907	1 648	81.7
Ethiopia	1 746	2 351	34.6
Gabon	1	1	-7.1
Ghana	22	15	-32.2
Guatemala	2 724	2 784	2.2
Guinea	386	309	-19.9
Haiti	7	2	-74.2
Honduras	2 811	3 582	27.4
India	2 870	4 903	70.9
Indonesia	4 773	3 855	-19.2
Jamaica	11	10	-5.7
Kenya	366	494	34.8
Liberia	2	0	-88.0
Madagascar	53	54	1.4
Malawi	12	12	-2.6
Mexico	2 052	2 047	-0.2
Nicaragua	1 395	1 336	-4.2
Nigeria	1	1	-46.5
Panama	48	39	-18.0
Papua New Guinea	715	605	-15.3
Paraguay	0	0	-98.4
Peru	1 856	2 156	16.2
Philippines	5	10	107.7
Rwanda	195	266	36.1
Sierra Leone	85	28	-66.8
Tanzania	538	710	32.1
Thailand	147	325	120.7
Timor-Leste	40	45	12.3
Togo	173	100	-42.4
Uganda	2 016	2 125	5.4
Venezuela	17	5	-71.3
Vietnam	11 323	13 850	22.3
Yemen	11	9	-21.8
Zambia	22	7	-67.2
Zimbabwe	8	8	2.2
Other exporting countries 1/	208	173	-16.9

In thousand bags

1/ Equatorial Guinea, Guyana, Lao (PDR), Nepal, Sri Lanka and Trinidad and Tobago

Official Brazilian production of 48.1 million bags in 2010/11, and the high levels of exports during the year, indicate that **opening stocks** in Brazil for crop year 2011/12 have dropped to 6.2 million bags. In view of the intense export activity, it is likely that there will be a similar reduction in many other exporting countries.

World consumption during the last three calendar years (2008 to 2010) is shown in Table 5. Consumption is estimated at 134 million bags in calendar year 2010 compared to 131.3 million bags in 2009, an increase of 2.4%. Domestic consumption in exporting countries was estimated at 40.4 million bags in 2010, representing 30% of world consumption. Consumption in importing countries totalled 93.6 million bags. The buoyancy of world consumption is a determining factor in the maintenance of a balance between supply and demand.

As a result of the firmness of green coffee prices in the first quarter of 2011, retail prices have increased in many importing countries (Table 6).

**Table 5: World consumption
(Calendar years 2008 to 2010)**

	2008	2009	2010	2010-2009	
				Difference	% change
WORLD TOTAL	132 646	131 278	134 011	3 129	2.4
Exporting countries	37 799	38 985	40 428	1 442	3.7
Brazil	17 526	18 208	18 945	738	4.1
Indonesia	3 333	3 333	3 333	0	0
Ethiopia	2 933	3 089	3 253	165	5.3
Mexico	2 200	2 200	2 239	39	1.8
Venezuela, B.R.	1 599	1 649	1 650	1	0
Vietnam	1 021	1 208	1 583	375	31.0
India	1 518	1 605	1 725	120	7.5
Colombia	1 400	1 400	1 400	0	0
Philippines	1 070	1 080	1 080	0	0
Others	5 199	5 214	5 220	6	0.1
Importing countries	94 848	92 293	93 584	1 291	1.4
European Union	40 230	39 652	40 923	1 271	3.2
Germany	9 535	8 897	9 292	395	4.4
France	5 152	5 677	5 930	253	4.5
Italy	5 892	5 806	5 781	-25	-0.4
Spain	3 485	3 352	3 232	-120	-3.6
United Kingdom	3 067	3 220	3 123	-97	-3.0
Poland	1 681	2 001	2 086	85	4.2
Netherlands	1 324	898	1 327	429	47.8
Sweden	1 272	1 133	1 221	89	7.8
Finland	1 115	1 058	1 080	22	2.1
Others	7 707	7 610	7 851	241	3.2
Japan	6 881	6 964	7 264	300	4.3
Norway	715	715	746	30	4.3
Switzerland	1 149	966	1 012	46	4.8
Tunisia	317	289	298	9	3.2
Turkey	484	521	610	89	17.0
USA	21 652	21 436	21 784	348	1.6
Other importing countries	23 418	21 751	20 947	-804	-3.7
Russian Federation	3 716	3 131	3 661	530	16.9
Canada	3 210	3 292	3 586	294	8.9
Algeria	2 118	2 066	2 021	-45	-2.2
Korea, Rep. Of	1 665	1 551	1 666	115	7.4
Ukraine	1 733	1 460	1 485	25	1.7
Australia	1 145	1 223	1 370	148	12.1

In thousand bags

**Table 6: Retail prices of roasted coffee
in selected importing countries**

Country					% change
	Mar-08	Mar-09	Mar-10	Mar-11	2010-2011
Austria	463.39	658.90	672.13	792.51	17.9
Belgium	563.38	492.10	508.72		
Bulgaria	428.60	357.81	374.35	399.72	6.8
Cyprus	651.42	547.11	570.39	587.40	3.0
Czech Republic	574.22	483.87	503.19		
Denmark	536.43	489.26	538.53	653.89	21.4
Finland	378.88	322.94	339.15	496.59	46.4
France	405.64	352.52	369.98	398.79	7.8
Germany	543.66	441.23	468.64	510.55	8.9
Italy	814.09	718.63	751.67	819.17	9.0
Japan	909.08	633.05	671.49	654.38	-2.5
Latvia	574.24	582.76	598.65	795.21	32.8
Luxembourg	769.02	681.37	707.90	795.05	12.3
Netherlands	532.40	440.05	468.64		
Norway	494.62	367.49	456.27	574.19	25.8
Poland	461.23	294.10	384.75	399.08	3.7
Portugal	583.80	501.56	513.65	525.16	2.2
Slovakia	504.48	473.17	499.47	533.42	6.8
Slovenia	521.13	442.41	442.12	464.20	5.0
Spain	445.08	392.73	402.05	426.74	6.1
Sweden	384.96	303.97	381.23	528.34	38.6
United Kingdom	801.44	637.88	686.23	840.74	22.5
USA			356.50	464.20	30.2

In US cents/lb

In conclusion, it should be noted that coffee prices continue to be vulnerable to downward corrections, as the frost season in Brazil nears its end, even though the levels recorded are still far higher than in recent years. Nevertheless, the depreciation of the US dollar in relation to the currencies of some exporting countries is likely to accentuate the impact on export earnings. Although retail prices have increased in many importing countries, consumption remains buoyant, encouraging strong export performance in most exporting countries.

Total exports during the first nine months of the coffee year (2001/02 to 2010/11)

	October to June									
	2001/02	2002/03	2003/04	2004/05	2005/06	2006/07	2007/08	2008/09	2009/10	2010/11
TOTAL	63 989	67 623	67 559	69 576	64 375	74 521	72 015	75 064	69 670	80 725
Colombian Milds	9 332	9 231	9 231	9 802	8 934	9 329	10 097	8 285	6 250	7 683
Other Milds	15 395	15 946	15 290	15 251	14 937	16 030	16 249	16 385	16 665	19 534
Brazilian Naturals	16 902	19 409	19 196	21 839	19 409	23 063	20 495	23 613	22 574	25 290
Robustas	22 361	23 037	23 842	22 684	21 094	26 099	25 174	26 781	24 180	28 217
Arabicas	41 629	44 586	43 717	46 892	43 280	48 422	46 841	48 283	45 489	52 508
Robustas	22 361	23 037	23 842	22 684	21 094	26 099	25 174	26 781	24 180	28 217
Africa	8 869	9 197	8 896	8 362	7 566	8 962	8 473	7 727	8 038	8 155
Cameroon	485	548	705	529	492	584	396	371	669	499
Côte d'Ivoire	2 389	2 086	2 018	1 380	1 219	1 549	1 370	1 080	1 474	700
Ethiopia	1 431	1 605	1 698	1 978	1 995	2 066	2 018	1 175	1 746	2 351
Kenya	575	652	647	522	496	535	511	436	366	494
Tanzania	541	781	521	687	693	717	688	1 057	538	710
Uganda	2 181	2 020	1 889	1 885	1 492	2 025	2 348	2 330	2 016	2 125
Others	1 267	1 505	1 418	1 380	1 179	1 486	1 143	1 279	1 229	1 276
Asia & Oceania	16 359	15 752	19 489	18 677	18 054	21 137	19 930	22 090	20 090	23 773
India	2 801	2 724	3 048	2 216	2 475	2 622	2 545	2 285	2 870	4 903
Indonesia	3 158	3 043	3 504	4 219	3 950	2 731	3 449	4 200	4 773	3 855
Papua New Guinea	591	671	726	610	702	458	749	650	715	605
Thailand	210	146	156	322	525	251	117	127	147	325
Vietnam	9 335	8 903	11 772	11 030	10 189	14 767	12 809	14 575	11 323	13 850
Others	264	265	283	279	214	308	262	252	262	235
Mexico & Central America	10 402	10 669	10 246	9 685	10 085	10 571	11 347	10 930	11 011	12 530
Costa Rica	1 510	1 388	1 216	1 264	1 120	1 129	1 148	1 156	1 020	1 016
El Salvador	1 103	1 093	1 082	1 110	1 002	928	1 149	1 112	907	1 648
Guatemala	2 406	3 076	2 540	2 786	2 489	2 760	2 972	2 744	2 724	2 784
Honduras	2 042	2 170	2 354	2 092	2 388	2 526	2 796	2 513	2 811	3 582
Mexico	2 320	1 936	1 945	1 446	1 781	2 150	1 928	2 146	2 052	2 047
Nicaragua	725	723	911	828	1 088	904	1 178	1 084	1 395	1 336
Others	297	283	198	160	218	174	177	175	102	118
South America	28 359	32 006	28 927	32 853	28 670	33 852	32 264	34 317	30 531	36 267
Brazil	17 807	21 364	18 744	21 176	18 349	22 261	20 689	24 207	22 347	26 368
Colombia	8 379	8 106	8 156	8 779	7 945	8 310	9 083	7 133	5 458	6 735
Ecuador	403	447	397	690	651	747	661	672	795	960
Peru	1 607	1 728	1 402	2 102	1 638	2 395	1 657	2 238	1 856	2 156
Others	164	360	228	105	87	138	174	67	76	47

In thousand bags