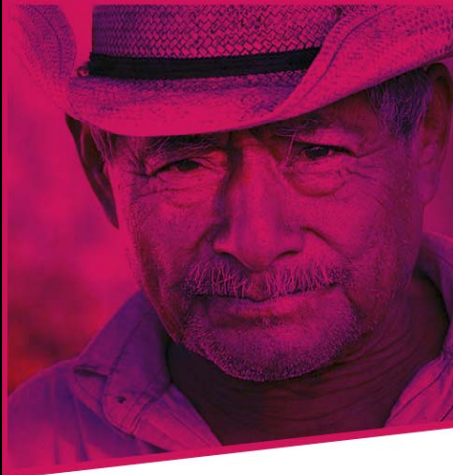


coffee & climate
enabling effective response



Initiative for coffee & climate

Enabling effective response
Building a sector initiative
September 2013

Mensajes



RESEARCH PROGRAM ON
Climate Change,
Agriculture and
Food Security



En los próximos años, el cambio climático va a poner en peligro la agricultura, la seguridad alimentaria y el sustento rural...

In the next years climate change will put agriculture, food security and rural livelihood in danger...

Impacts in coffee are already visible

Originally published January 27, 2013 at 8:01 PM | Page modified January 27, 2013 at 8:41 PM



Coffee farmers struggle to adjust to climate change

Ill-timed rains used to be rare, coming maybe once a decade. So did unusually long and hot dry spells, which now come regularly.

Brazil Weather Will Determine Coffee Prices, They Could Soar This Winter

May 31, 2011



Central America battles to save coffee from fungus

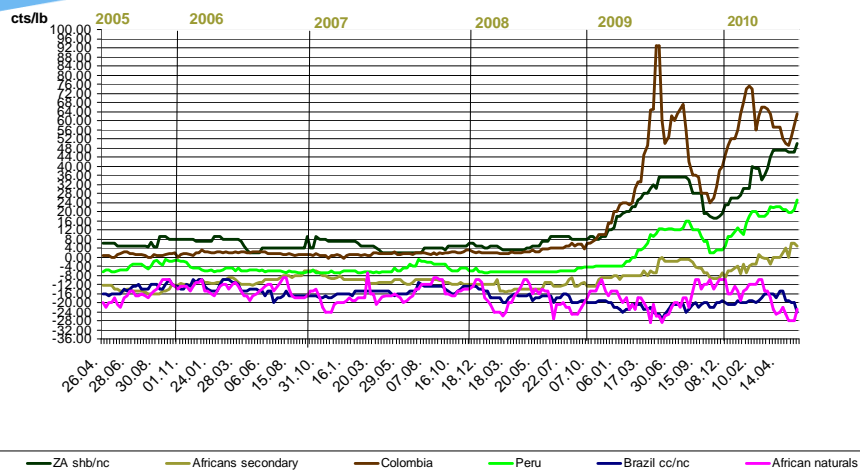
Jan 18, 2013

Roya pone en peligro producción cafetalera hondureña



coffee & climate

Market reactions – differentials

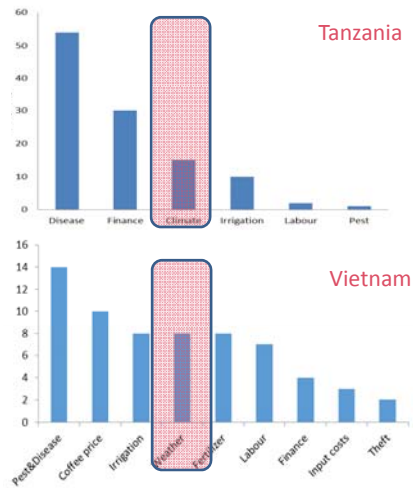
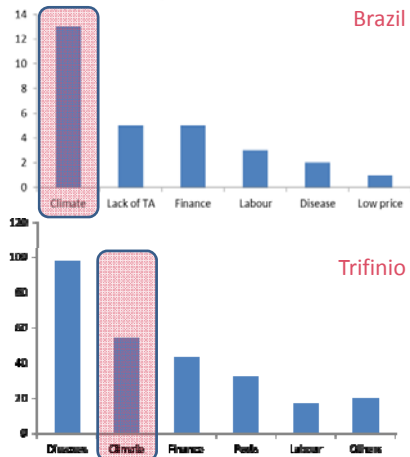


coffee & climate

What the farmers told us

Ranking score of production problems

1st problem = 3; 2nd = 2; 3rd = 1



coffee & climate

Initiative for coffee & climate

founding members



new partners



implementing agents

Hanns R. Neumann Stiftung, CABI, GIZ

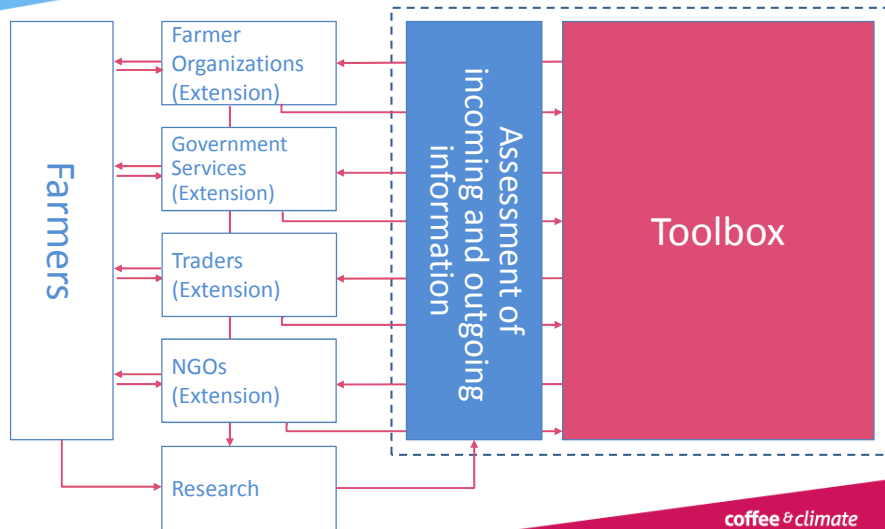
structure

public-private partnership



coffee & climate

c&c toolbox in operation



The toolbox

25+ generic tools for adaptation

1. Analysing tools
 - Risk assessment
 - Cost-benefit analysis
2. Adaptation tools
 - Farm level
 - Community, landscape, watershed level
3. Enabling tools
4. Climate change database

25+ generic tools for adaptation

1. Analysing tools

2. Adaptation tools

- Farm level
- Community, landscape, watershed level

3. Enabling tools

4. Climate change database

- High temperature
- Drought
- Heavy rain
- Prolonged rain
- Untimely rain

coffee & climate

25+ generic tools for adaptation

1. Analysing tools

2. Adaptation tools

- Farm level
- Community, landscape, watershed level

3. Enabling tools

4. Climate change database

- Landslides
- Fire
- Groundwater level

coffee & climate

25+ generic tools for adaptation

1. Analysing tools
2. Adaptation tools
 - Farm level
 - Community, landscape, watershed level
3. Enabling tools ←
4. Climate change database

- Credits
- Insurance
- PES

coffee & climate

25+ generic tools for adaptation

1. Analysing tools
2. Adaptation tools
 - Farm level
 - Community, landscape, watershed level
3. Enabling tools
4. Climate change database ←

- Distribution & zoning maps
- Risk maps
- Country reports
- Scientific studies

coffee & climate

It is fundamentally a risk-based approach

- Risk reduction (e.g. farm adaptation tools)
- Risk avoidance (e.g. emergency response)
- Risk transfer (e.g. insurance)

- We estimate material risks to production and farmers' livelihoods

coffee *climate*

It is participatory

- Climate change is a reality; it unfolds location-specific
- We cannot come to the farmer with a fixed set of recommendations
- We come with a range of tools and knowledge
- And then work with the farmer to test them under local conditions and the select, modify, improve them



coffee *climate*

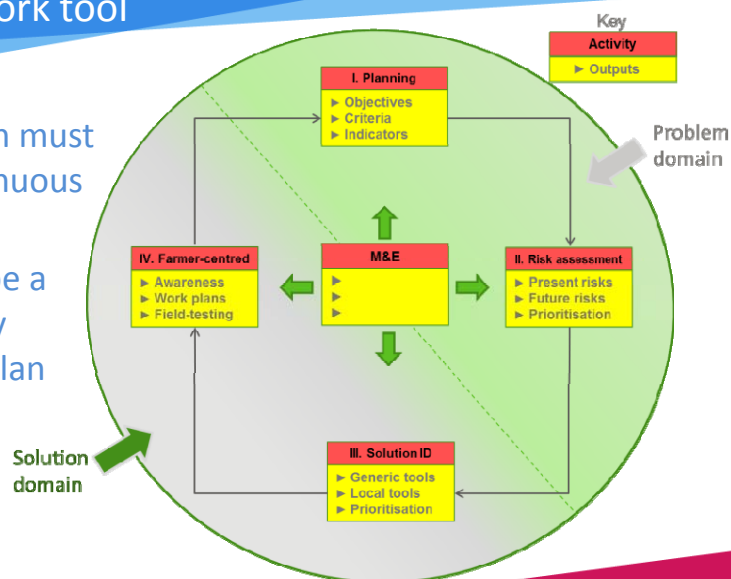
Why this initiative?

- Globally now there have been many climate change projects, e.g.:
 - Vulnerability assessments
 - Modelling
 - Pilot projects
- But they have had little impact
- What is needed is a comprehensive approach to this increasingly grave problem

coffee & climate

A systematic response a framework tool

- Adaptation must be a continuous process
- It should be a part of any business plan



coffee & climate

Summary

- The complexity of climate change requires an organized response, one that is:
 - Comprehensive
 - Systematic
 - Scientific
 - Participatory
- The c&c initiative is currently the most complete approach for any commodity

coffee & climate

Reflexão final

- Climate change is happening
- It is already affecting coffee production
- It will get worse

*“ If not us, then who?
If not now, then when?
If not here, then where?”*

[Naderev Saño, Lead IPCC Negotiator of the Philippines, Doha Dec 2012]

coffee & climate

coffee & climate
enabling effective response



Join our c&c workshops at 8° Espaço Café Brasil

www.coffeeandclimate.org
www.toolbox.coffeeandclimate.org