



BATIAN COFFEE

**A New Coffee Variety Resistant To Coffee Berry
Disease And Coffee Leaf Rust**

Dr. Joseph K. Kimemia

Coffee Research Station, Ruiru, Kenya

"The Centre of Excellence in Coffee Research"



Background

- ✓ Breeding work in coffee started in 1971 after the outbreak of Coffee Berry Disease (*Colletotrichum kahawae*) and Leaf Rust (*Heimelea vastratix*) in the late 1960s
- ✓ The main breeding goal has been to develop cultivars that combine resistance to diseases with improved yields and quality.
- ✓ In 1985, the first disease resistant hybrid cultivar, Ruiru 11, was released.
- ✓ Further research and development has culminated to the release of another disease resistant variety namely Batian.

"The Centre of Excellence in Coffee Research"

IMPORTANCE OF  CBD & LEAF RUST



CLR



CBD



"The Centre of Excellence in Coffee Research"



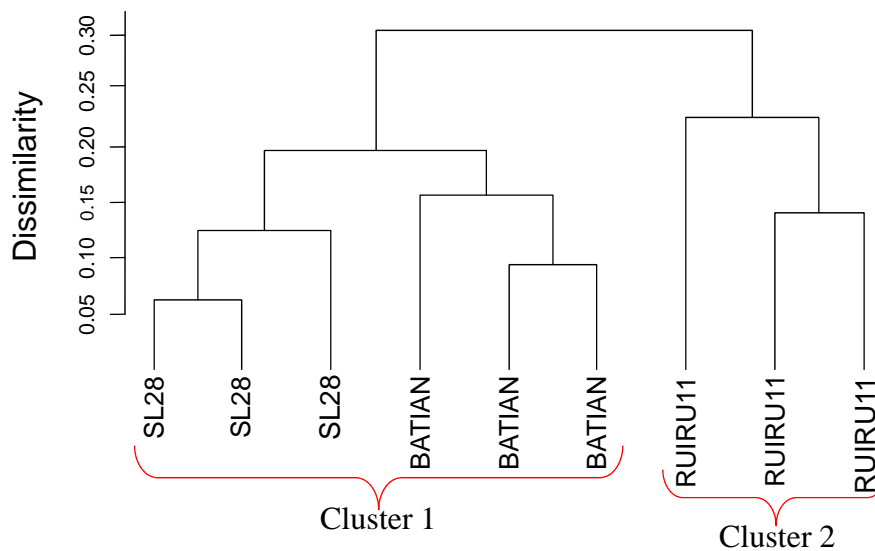


TOWARDS THE NEW VARIETY

- ✓ After the release of Ruiru 11 in 1985, the breeding programme was advanced to address emerging issues
- ✓ Farmers also wanted a variety with features similar to SL28 but resistant to CBD and Leaf Rust.
- ✓ The variety was selected from SL28- and SL34- backcrosses.
- ✓ Donor parents for resistance to diseases are of Arabica type
- ✓ The breeder's data for over ten years confirmed that the material qualified for release to farmers.
- ✓ The variety was recommended for full release in May 2010 and officially launched on 8 September 2010

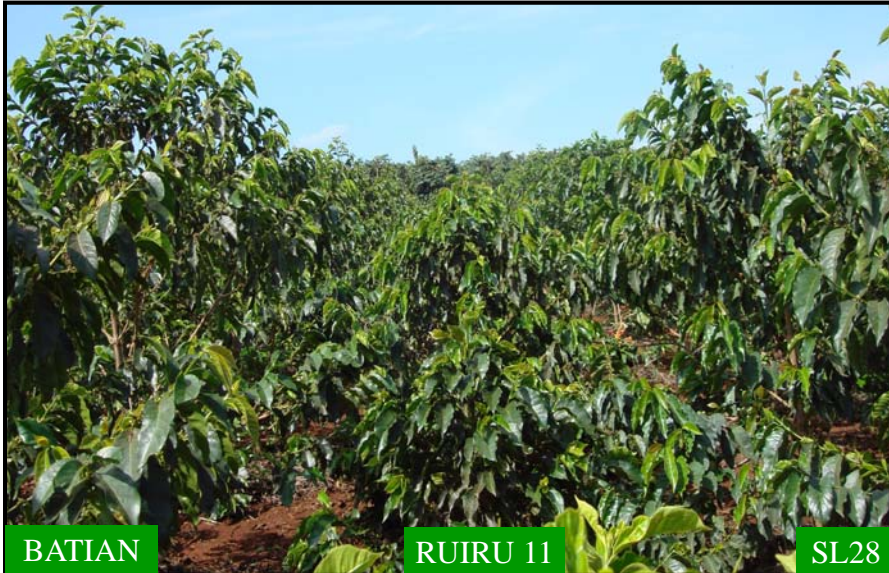
"The Centre of Excellence in Coffee Research"

GENETIC RELATIONSHIP



"The Centre of Excellence in Coffee Research"

MORPHOLOGICAL DISSIMILARITY



"The Centre of Excellence in Coffee Research"



AGRONOMIC PRACTICES

- Recommended Spacing: 2m x 2m giving a plant population of 2500 trees per ha.
- The new varieties are resistant to CBD and Leaf Rust. Other diseases should be controlled as recommended for other varieties.
- Other management practices are similar to those of traditional coffee varieties.
- Can produce up to 5 tons of clean coffee per ha under good management

"The Centre of Excellence in Coffee Research"

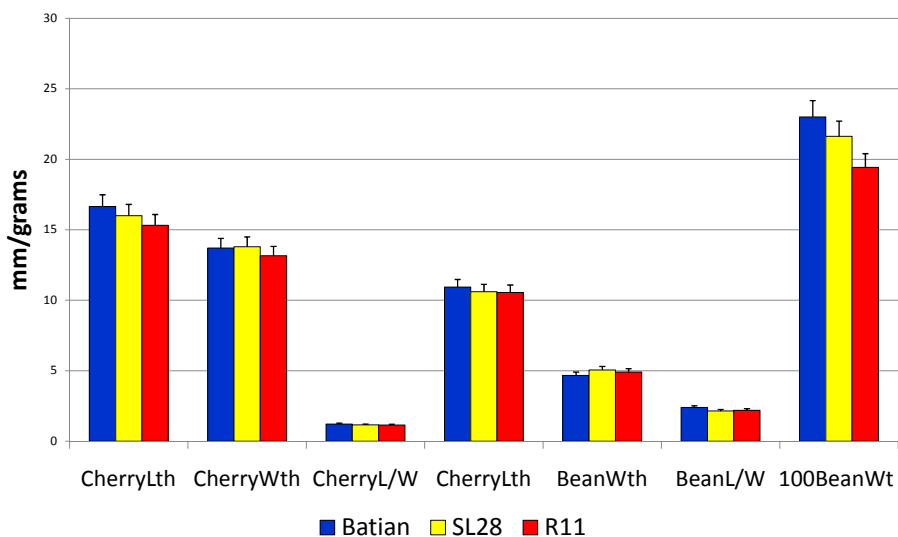
AGRONOMIC PERFORMANCE

	TEST STATUS	CLEAN COFFEE (t/ha)	CLEAN COFFEE (t/ha)		CBD Score	CLR Score
			ABOVE BEST CHECK	ABOVE MEAN OF CHECKS		
BATIAN	CANDIDATE	3.56	15.17%	16.57%	3.08	3.33
RUIRU 11	CHECK	3.02			4.15	0.33
SL28	CHECK	2.92			10.36	92.33
MEAN OF CHECKS		2.97				

- ✓ Column 3 Represents Third Year Yield Data
- ✓ CLR Scale: <20 = Highly Resistant; 21-40 = Resistant; 41-60 = Moderate Susceptible; 61-80 = Susceptible; >80 = Highly Susceptible
- ✓ CBD Scale: 0-3 = Highly Resistant; 4-6 = Resistant; 7-9 = Susceptible; 10-12 = Highly Susceptible

“The Centre of Excellence in Coffee Research”

CHERRY AND BEAN SIZE



“The Centre of Excellence in Coffee Research”

BATIAN TRIAL PLANTED IN DEC 2007




BATIAN WITH  RIPE CHERRY



"The Centre of Excellence in Coffee Research"



Specialty Coffee of America Cupping Form



Specialty Coffee Association of America Coffee Cupping Form

Name: _____

Date: _____

Quality scale:			
6.00 - Good	7.00 - Very Good	8.00 - Excellent	9.00 - Outstanding
6.25	7.25	8.25	9.25
6.50	7.50	8.50	9.50
6.75	7.75	8.75	9.75

FRAGRANCE FLAVOUR ACIDITY BODY UNIFORMITY OVERALL

Sample #	Roast Level or sample	Score: _____		Score: _____		Score: _____		Score: _____		Score: _____		Score: _____		Total Score
		Fragrance/Aroma	Flavor	Acidity	Body	Uniformity	Clean Cup	Overall						
		6 7 8 9 10	6 7 8 9 10	6 7 8 9 10	6 7 8 9 10	6 7 8 9 10	6 7 8 9 10	6 7 8 9 10						
		Dry	Qualifies	Break	Score: _____	Intensity	Level	Balance	Score: _____	Sweetness	Defects (subtract)	Taint=2	# cups	Intensity
					6 7 8 9 10	High	Heavy	6 7 8 9 10			Fault=4	X	=	
					Low	Thin								
Notes:		AFTERTASTE				BALANCE SWEETNESS				Final Score				

“The Centre of Excellence in Coffee Research”

**Comparative sensory evaluation of commercial coffee varieties
and Batian by CQI and Kenyan cuppers**

Sensory variables	Panel	Varieties		
		Batian	R11	SL28
Fragrance/Aroma	KEN	7.86	7.29	7.43
	CQI	7.67	7.67	7.58
Flavour	KEN	7.71	7.64	7.50
	CQI	8.00	7.42	7.50
Aftertaste	KEN	7.64	7.43	7.43
	CQI	8.08	7.50	7.58
Acidity	KEN	7.93	7.50	7.64
	CQI	7.92	7.50	7.67
Body	KEN	7.79	7.57	7.50
	CQI	7.83	7.75	7.50
Balance	KEN	7.93	7.57	7.79
	CQI	7.83	7.58	7.83
overall	KEN	7.86	7.57	7.71
	CQI	8.17	7.42	7.58

“The Centre of Excellence in Coffee Research”



Comments By Trade

- *Good acidity*
- *Complex flavour*
- *Sweet*
- *Complex body*
- *Useful body*

“The Centre of Excellence in Coffee Research”

